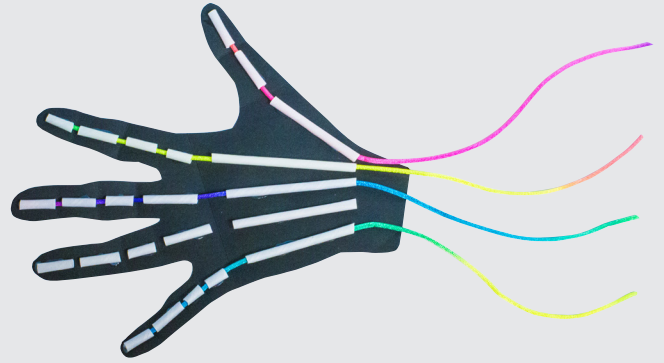


Halloween Moving Hand



Difficulty: Moderate



Materials Used

Artstraws

Rainbow Cord or string

Card

Hand

1. Place your hand on a piece of card and draw round it.
2. Cut out the hand shape.
3. Mark the position of the finger joints and then fold the joints so they bend slightly.
4. Cut small bits of Artstraws and stick between the joints.
5. Thread cord or string (approx. 25cm) up through the Artstraws starting at the palm.
6. Glue the cord in place at the top of each finger.
7. Once dry this will allow the joints to bend when the strings are pulled.